

HOFMANN®



***geoliner™* 600/650**

WHEEL ALIGNERS

HOFMANN IMAGING TECHNOLOGY

Set-Up To Readings In Under 2 Minutes

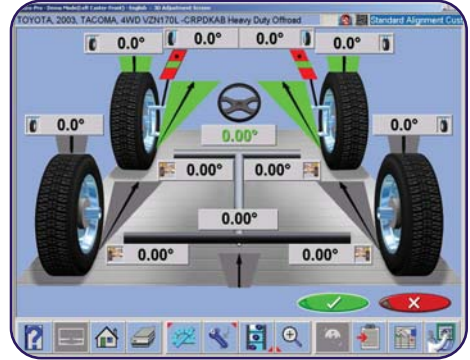
Imaging Technology allows you to do more alignments in less time. The patented non-electronic shatter-proof wheel targets eliminate service calls for calibrations and wheel sensor maintenance.



1 Mount wheel targets



2 Roll vehicle back or pull forward only 8"



3 Obtain all alignment readings in under 2 minutes. Adjust vehicle using live measurements.

ALIGNMENT BAY REQUIREMENTS

High-Definition Imaging Cameras allow for system installation within a smaller shop bay!



IMAGING SYSTEM FEATURES



Optional VHCS

- Variable-Height Camera Support (EAA0321J19C), shown with standard Camera Beam
- Eliminates the need for fixed-position/level surfaces during alignments
- Positions cameras in range with a touch of a button - even during the alignment process!

VODI™

- Vehicle Orientation Directional Indicator, located on camera beam
- Guides technician through measuring process
- Reduce the amount of time spent walking back and forth from the vehicle to the aligner console



Universal Wheel Clamps

- Handle wheel diameters ranging 13" to 24" standard (up to 28" with optional clamp extensions EAK0268J62A)
- Interchangeable grippers minimize wheel damage

3D Animation

- Provides vehicle-specific adjustment information with easy-to-understand 3D graphics
- Refers to spare parts or special tools as applicable



* Patented and/or Patent Pending Features

geoliner™ 650



Traditional Roller Cabinet
Shown with Optional Variable-Height Camera Support

geoliner™ 600



Space-Saving Shelf Mount Configuration
Shown with Optional Fixed-Height Camera Support Extended and Electronic-Tilt Camera System (FHCSE/ETCS Kit)

geoliner™ 600/650

HOFMANN®



FEATURES

Productivity Enhancing Features

- Zoom Readings
- Individual Camber
- Individual Toe
- Individual Caster
- Front Caster (-28° to +28°)
- Front & Rear Camber (-15° to 15°)
- Advanced Alignment Measurements with reading/specifications and cross values
- Meter Screens
- Remote Control (Optional)
- 3D Animation
- Video Help
- A-Arm Adjustments
- Adjust Camber Only
- Elevated Adjustments
- 4-Wheel Steer Adjust
- Rear Shim Programs
- Adjustment Help Files
- EZ-Track Database
- Vehicle Specs: 25+ years
- EZ-Toe*
- Ride Height*
- 2-Wheel Alignment
- Thrust Align Only
- 28 Languages
- Multiple Print Formats
- Variable-Height Camera Support Controls
- Custom Vehicle Specifications

(Productivity Enhancing Features continued)

- Regional Specifications
- Calibration History
- Aligner System Diagnostics
- Backup/Restore of Calibration and Setup Data
- Integrated Help System (PDF)
- Tools, Parts, and Adjustment Instructions
- Advanced Customer Database with Backup/Restore
- Multiple Units of Measure
- Caster and SAI on Turntables
- SAI Elevated
- Live Caster, Camber and Toe - Turntables
- Live Caster, Camber and Toe - Elevated
- NorthStar Shim Program
- Light Truck Bushing

Measurements

- Front Readings
- Rear Readings
- All Readings
- SAI & Thrust Angle
- Included Angle
- Toe-Out-On-Turns
- Front and Rear Toe
- FrameCheck™ Light Truck Frame Angle



geoliner™ 650
EEWA712AL
Shown with Optional Variable-
Height Camera Support

SPECIFICATIONS

Equipment Specifications

- Wheel size: 13" - 24"
- Tire diameter: Unlimited
- Tread width: 48" - 96"
- Wheel base: 79" - 180"
- Power Requirements: 120/230V, 1Ph, 60Hz

Standard Accessories

- Universal Wheel Clamp (13"-24")/Target Kit: EAK0268J52A
- Steering Wheel Holder: 00055502000
- Brake Pedal Depressor: 00000096000
- Camera Beam Assembly: EAA0305J48A
- Color Ink Jet Printer: EAK0268J05A

Optional Accessories

- 28" Universal Wheel Clamp Extension Kit: EAK0268J62A
- Alloy Quick-Clamp Kit: EAK0268J63A
- Frame Angle Gauge: 8-05320A
- Remote Display Readout: EAK0268J08A
- Convex Mirror: P-1826
- BMW 7 Series / MB A-Class Hub Pin Kit: EAK0256J41A
- Porsche Alloy Adapter Kit: EAK0222J20A
- Rollback Rubber Pads: JBC04600000
- Wheel Clamp Floor Stand: EAK0289J71A

Recommended Accessories

- Premium Turntables: EAK0289J06A
- Paddle Kit for Premium Turntables: EAK0277J28A
- 4-Post Rollback Kit: EAK0277J39A
- 12K Scissor Rollback Kit: EAK0277J40A
- 12K Scissor Roll Forward/Rollback Kit: EAK0277J47A
- 10K/14K Scissor Rollback Kit: EAK0277J67A
- Hunter/Rotary Rollback Kit: EAK0277J45A

Optional Camera Support Configurations

- Variable-Height Camera Support: EAA0321J19C†
- Fixed-Height Camera Support: EAA0321J01A‡
- FHCSE/ETCS Kit: EAK0289J9A‡
- 8" Wall/Pit Camera Fixture: EAK0289J63A
- 30" - 60" Wall/Pit Camera Fixture: EAK0289J36A
- Electronic-Tilt Camera System: EAK0289J64A



geoliner™ 600
EEWA721AL
Shown with Optional Fixed-Height
Camera Support Extended and
Electronic-Tilt Camera System
(FHCSE/ETCS Kit)

† EEWA712AL Only

‡ EEWA721AL Only

* Patented and/or Patent-Pending Features

HOFMANN®

USA

309 Exchange Avenue • Conway, AR 72032
(800) 251-4500 • (501) 505-2662
Fax (501) 450-2085 • www.hofmann-usa.com

HOFMANN®

Canada

6500 Millcreek Drive • Mississauga, ONT L5N 2W6
(800) 267-2185
Fax (905) 821-2073 • www.hofmann.ca